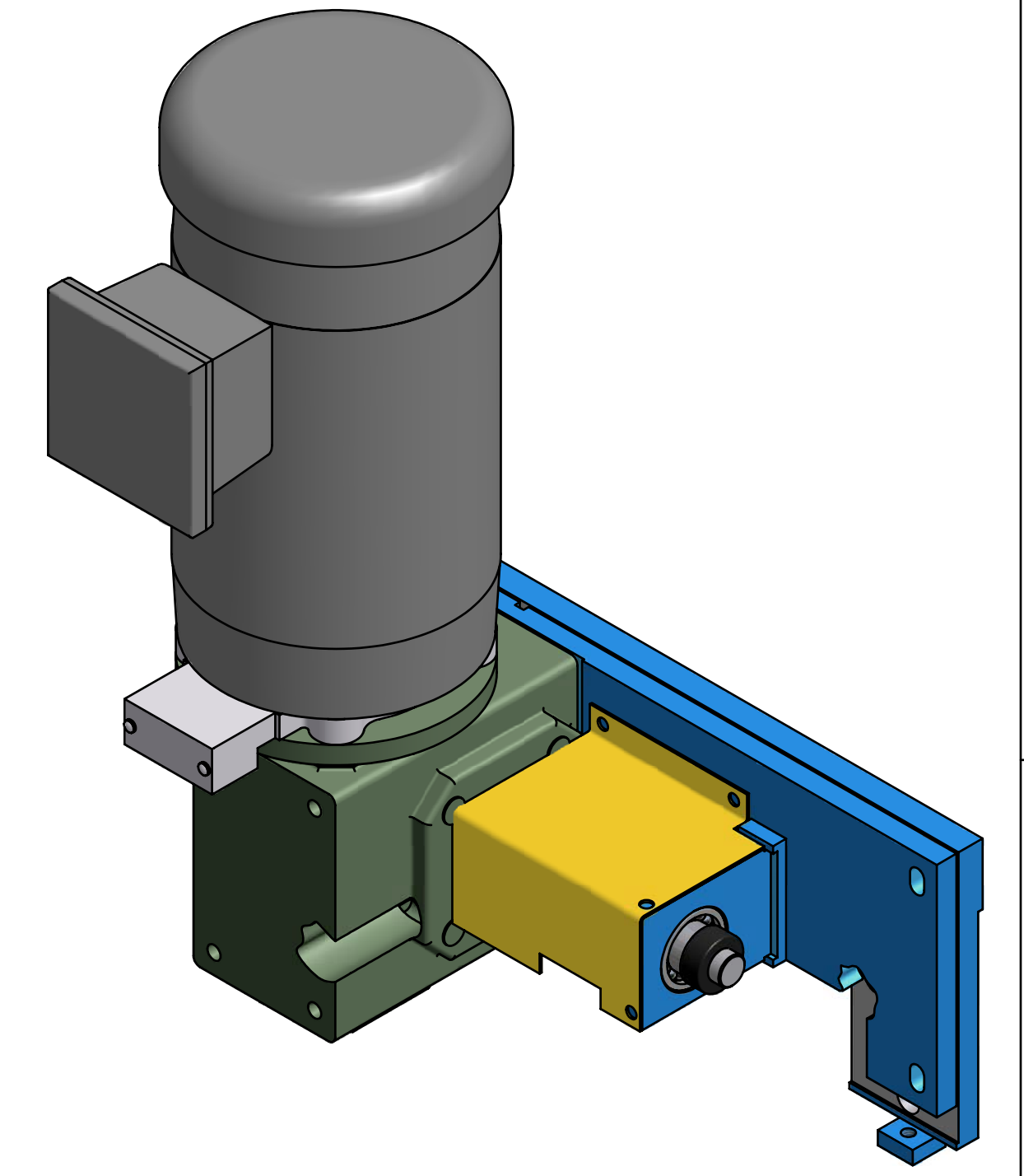
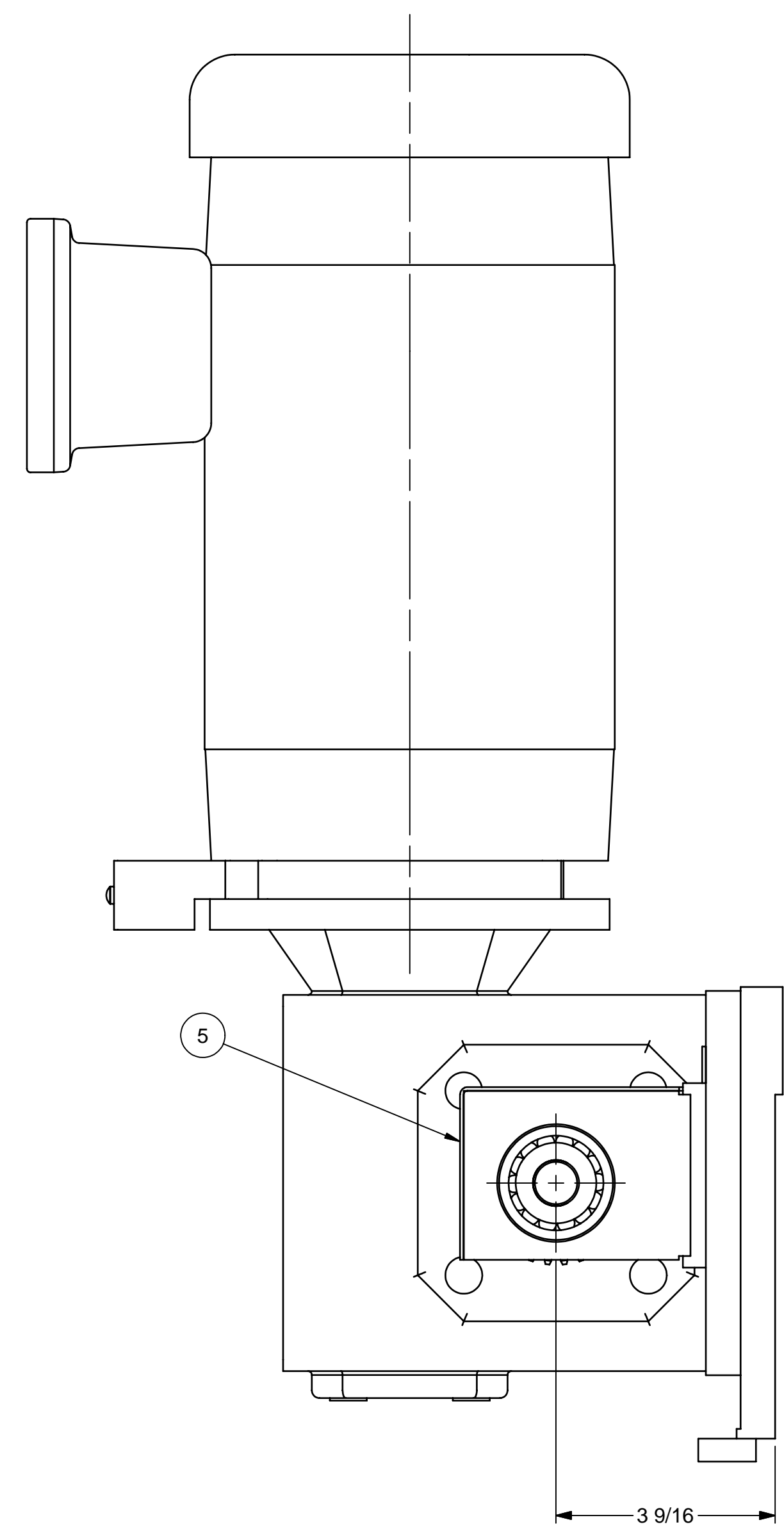


Item 5 Cover not shown this view



SERVICE PARTS NOTICE: Revision B is for Use with Gearbox Mounted Encoder. Revision A is for Use with Tether Style Encoder. See E-5137-1A for Rack & Pinion Assembly for Use with Rigid Mount Encoder. Consult Engineering for Further Information.

ITEM	QTY	PART NUMBER	DESCRIPTION
10	1	SR-5000-187	BostonGear HF724-50PS-B5-P20 Reducer
9	1	GR-5000-013	Browning NSS1230 Spur Gear
8	1	EM-5000-059	Baldor VM3538 EI Motor 1/2 HP-1725 rpm-TEFC-56C fr
7	1	MI-5000-086	Contrex 7300-1620 (56C) Sensor Kit
6	1	A-3900-199	Fafnir 1012KRR Bearing
5	1	B-4588-9B	Cover - Pinion Gear - Model 541
4	1	B-4476-4E2	Mounting Plate - Reducer - Rack & Pinion - Model 541
3	1	B-4476-3E1	Base Plate - 541 Rack & Pinion Drive
2	1	B-4476-1H	Shaft - Drive - Rack & Pinion - Model 541
1	1	A-4279-4	Bearing Housing - 541 R & P Drive

RELEASED	DATE	DIMENSIONS ARE IN INCHES AND DEGREES UNLESS OTHERWISE NOTED. DIMENSIONING AND TOLERANCES IN ACCORDANCE WITH ANSI Y14.5-1994 FRACTIONS DECIMALS ANGLES $\pm 1/16"$.X $\pm .050$ $\pm .06^\circ$.XX $\pm .010$.XXX $\pm .005$
APPROVED	DATE	
PROJ. MGR.	DATE	
MATERIAL		
WEIGHT		BREAK AND DEBURR ALL SHARP EDGES THIRD ANGLE PROJECTION
NEXT ASSEMBLY		

SAWING SYSTEMS INC.
 P.O. Box 3754 • Knoxville, TN 37927-3754 • (865) 525-0600
 (800) 489-0601 • Telefax (865) 525-2320

TITLE: Model 541
Assembly - Rack & Pinion Drive
 1 Required

DRAWN: NDL	SCALE: 1:2	DWG/PART NO: E-5137-1B	SIZE: E	SHEET: 1 OF 1
DATE: 6/9/2005	WEIGHT:			REV: C

REVISION HISTORY				
ZONE	REV	DESCRIPTION	DATE	APPROVED
All	A	Changed Bearing Orientation to As Built Orientation	7/29/2006	NDL
All	B	Revised to as Built - Replaced Item 3 B-4476-1E (Shaft - Drive - R & P) with B-4476-1G (Shaft - Drive - R & P) & Replaced Item 6 EC-5000-1039 (Turck T8.5020.3722.1024 Encoder w/ 05/8" Bore) with MI-5000-086 (Contrex 7300-1620 Sensor Kit)	7/13/2006	NDL
All	C	Add Item 5 Sheet Metal Cover	8/1/2006	DLL

First Production Assembly Serial Number: **541C-05M28**
 Final Production Assembly Serial Number:
 Assembly Replaces: **E-5137-1A**
 Assembly Replaced By:

Parts List